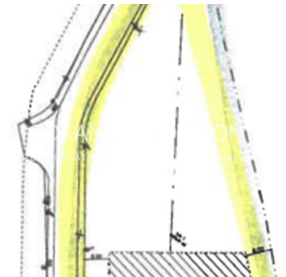
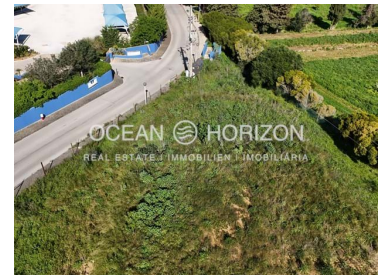




Luz - Land



 **469,5**

Area (m²)

 **3130**

Land Area (m²)

490 000 €

(EUR €)

Plot of land for the construction of a commercial property

This 3,130 square metre plot is located just a few minutes' drive from Lagos and Paria da Luz in the Algarve.

A commercial property can be built on the plot, e.g. a restaurant.

A construction area of 469.50 square metres and 35 parking spaces are approved.

On the schematic drawings you can see in which area of the plot the building can be situated and from a lateral perspective how it can be built above and below ground level.

Please contact us for further information or an on-site inspection.



Felix Schormann

felix.schormann@oceanhorizon.pt

T +351 928064049 ² · E info@oceanhorizon.pt

8600-152 Luz, Faro, Portugal

AMI 23337

¹ (Call to national fixed network) | ² (Call to national mobile network)



Property Features

- Proximity: Airport, Beach, Golf course, Open field
- Views: Countryside views, Garden view
- Solar orientation: North, South



Felix Schormann

felix.schormann@oceanhorizon.pt

T +351 928064049 ² · E info@oceanhorizon.pt
8600-152 Luz, Faro, Portugal
AMI 23337

¹ (Call to national fixed network) | ² (Call to national mobile network)